

Import sheet PaP Catalogue converter macro

▼ Content

1. Getting started

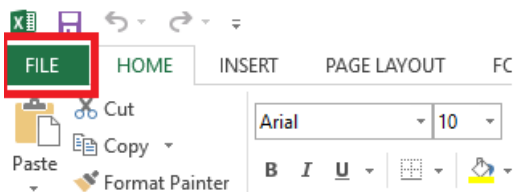
This document describes the import of a VBA macro file (attached to the documentation) that converts the PaP import sheet to the commonly agreed PaP Catalogue format. First, open the Import sheet and check, if the "Developer" tab is visible in your Excel.



If the tab is not visible, then you have to change some settings. In this case, please proceed to point 2, otherwise, you can continue with point 3.

2. Enable Developer tab

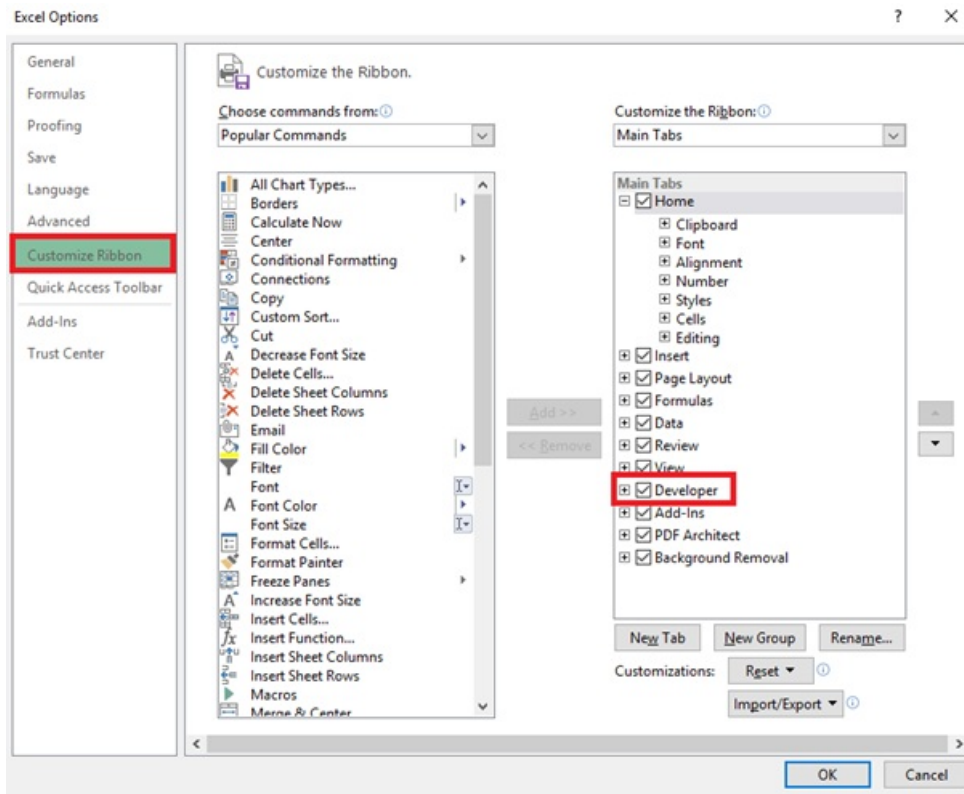
1. Open file



2. Select the options

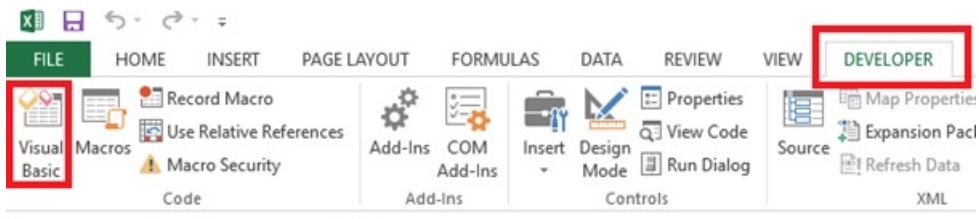


3. Select the "Customize Ribbon" option and there select the "Developer"

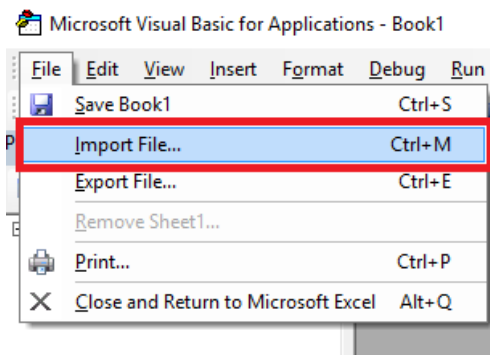


3. Import macro

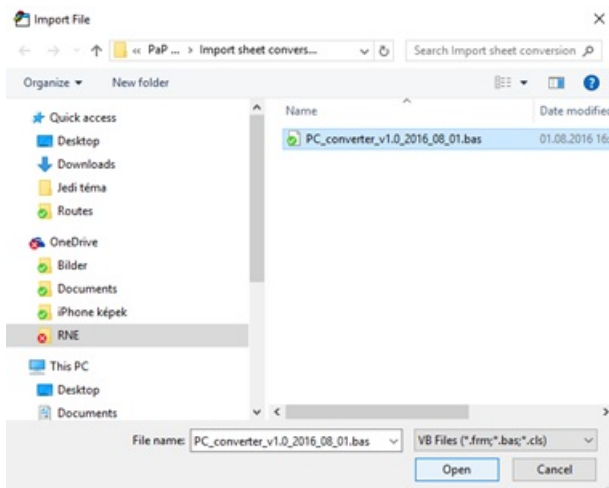
1. Select "Developer" tab and click on the Visual Basic icon



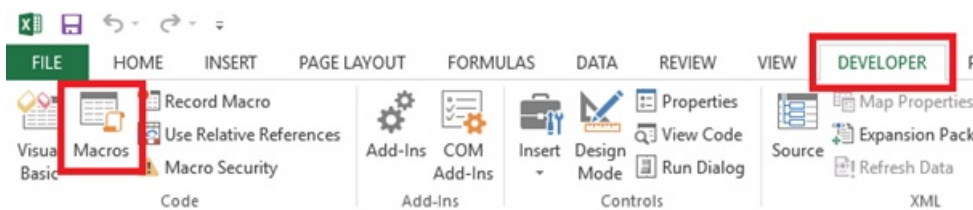
2. Click on the file option of the new window and there select the import option



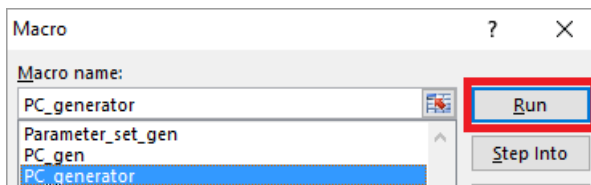
3. Select the macro file on your computer that you received or downloaded the attachment from here



4. Go back to the Excel, still on the "Developer" tab and click on the "Macros" icon



5. Select the "PC generator" from the macro list and then click on the run



4. Result

As a result, the program will generate as many PaP Catalogue sheets as many directions you defined in the import file. The order of the origin-destination pairs on the PaP Catalogue will be the same as you have them in the workbook. The order of the PaP IDs will be the same as you defined them on the sheet. If there is a new PaP ID on the second sheet that was not presented on the first sheet, the program will insert it as a new column at the end of the sheet.

Additionally, the program will generate another sheet for the parameter set codes.

▼ File

Document:

[pc_converter_v1.5.zip](#)

▼ Print

[Printer-friendly version](#)

[Send by email](#)

[PDF version](#)

▼ Details

State: Published

Topic: [Products](#)

[PaP](#)

Area: [Reference](#)

Release: [1.x](#)

Company: [IM](#)

Type: [RFC](#)

Keywords: [import](#)

[PaP](#)

[PaP](#)

[management](#)

[catalogue_path](#)

[upload](#)

[convert](#)

[macro](#)

▼ [Translations](#)

No translations

Source URL: <https://cms.rne.eu/pcs/pcs-documentation/import-sheet-pap-catalogue-converter-macro>